

**SACRAMENTO REGIONAL TRANSIT DISTRICT
BOARD OF DIRECTORS
BOARD MEETING
August 10, 2009**

ROLL CALL: Roll Call was taken at 6:00 p.m. PRESENT: Directors Dickinson, Hammond, Hume, MacGlashan, Miller, Morin, Nottoli, Pannell, Sander, Tretheway and Chair Cohn.

CONSENT CALENDAR

1. Motion: Action Summary - Board Meeting of July 27, 2009
2. Resolution: Awarding a Contract to Quality Sprayers, Inc. for Weed Abatement Services (Cain)
3. Resolution: Approving Third Amendment to Work Order No. 12 to the Contract with Psomas for General Engineering Support Services (Arnold)
4. Resolution: Authorizing Solicitation of Proposals for General Engineering Support Services (Abansado)
5. Resolution: Declaring Amalgamated Transit Union (ATU) Wages and Benefits Neither Fixed Nor Definite (Fong)
6. Resolution: Approving Amendments to the FY 2009 Capital Budget (Tyler)
7. Resolution: Amending Exhibit A of Resolution No. 09-06-0098, and Approving the District's List of Authorized Classifications, Positions and Salary Grades (Bonnel)
8. Resolution: Approving Capital California Airshow Admission Tickets as Fare Equivalent on September 12, 2009 and September 13, 2009 (Selenis)

ACTION: APPROVED - Director Pannell moved; Director Hume seconded approval of the consent calendar as written. Motion was carried by voice vote. Director MacGlashan recused herself on Item #3.

GENERAL MANAGER'S REPORT

9. General Manager's Report
 - a. Federal Updates

- b. State Updates
- c. RT Meeting Calendar

Mike Wiley verbalized his written report. In addition, Mr. Wiley noted that he was pleased to report that staff had identified an additional \$256,000 in internal cost cutting measures in the areas of supplies, outside services, travel, training, and other services. Staff had also identified \$2,242,000 in additional carryover funds from FY 09 (unanticipated PL/PD and Work Comp claims reductions), and \$127,000 in additional revenue. Consequently RT will be able to avoid any further service reductions.

Speaker: Mike Barnbaum

INTRODUCTION OF SPECIAL GUESTS

UNFINISHED BUSINESS

- 10. Resolution: Awarding a Contract to Smith, Watts & Company LLC for State Lobbying Services (Noble)

Speaker: DJ Smith

Chair Cohn requested that since the previous lobbying firm did such a good job that staff continue to work with the firm when possible.

ACTION: APPROVED - Director Tretheway moved; Director Pannell seconded approval of the item as written. Motion was carried by roll call vote. Ayes: Directors Dickinson, Hammond, Hume, MacGlashan, Miller, Morin, Nottoli, Pannell, Sander, Tretheway and Chair Cohn. Noes: None. Absent: None.

PUBLIC HEARING

NEW BUSINESS

- 11. Information: Funding Status of the Downtown-Natomas-Airport MOS-1 and the South Sacramento Corridor Phase 2 Projects (Brookshire/Nakano)

Speaker: Brian Williams

Several of the Board members made recommendations to staff about pursuing the possibility of swapping funds with other agencies, shifting funds from other RT capital projects into these projects, loaning money, etc. to fund the necessary projects.

ACTION: None - Oral Presentation - Introduced by Mike Wiley and presented by Dee Brookshire and Diane Nakano.

12. Resolution: Adoption of the TransitAction Plan (Covington/Marx)

Director MacGlashan noted her concern with the accuracy of the revenue source descriptions in Table 12 of the Executive Summary, and requested that staff amend the table to identify what type of actions should be necessary to pursue these sources (i.e., legislative change, 2/3rd vote, etc) in the document.

Director Hume suggested that in the future that the reports have consistent page numbers instead of chapter page number.

Director Sander - Chapter 3, Figure 3.4 shows operating costs per passenger mile comparing Sacramento with peer cities. This table shows that the cost per passenger mile exceeds every one of our peers. Are we really operating it at twice the cost per passenger mile of others? We are also near the top of costs on light rail per mile. RoseMary Covington agreed to get back to Director Sander regarding the comparison of numbers on this chart. Mike Wiley noted that this data does need to be updated.

Director Sander noted Chapter 5 - Table 5.8 - Frequency of service - The Rancho Cordova Street Car is getting 30 minute service; the other streetcar services are at 10/15 minute service. The first phase serves a dense office park and 30 minute headway may not meet the need of a rider.

Director Sander noted that Staff did a poll about what riders were interested in seeing on the system - The winner of the poll as noted on Table 6.22 - are safety improvements.

Director Nottoli wanted to know where safety improvements fall into a category. Table 6.3 shows the division and that the costs are included in every element of the plan.

Chair Cohn requested that the executive summary be done in an attractive way visually so that it can be distributed at meetings. The final product should also be on line.

Director Sander is worried about some of the key data because assumptions are based on them. Looking at the Rancho Cordova street car project (Table 7.10) he noted that the table only identifies the key streetcar destinations and he believes that the list is not complete (missing the job center, Capital Village, etc.). Rosemary Covington noted that other maps were produced for every community that talks about transit improvements for each community and about the key destinations served in the community. These maps have been used in individual community meetings. Chair Cohn requested that these maps be included in the final plan.

Director Sander noted Table 10.2 - Rail Project Ranking - The streetcar in Rancho Cordova does not score very well. He reiterated his concern about the accuracy of the data. He noted that the RT's population growth numbers show 17% of the region's

population growth is going to occur in Rancho Cordova. If you look at SACOG's, it is 20%. He noted that a third of the region's population growth is occurring in Rancho Cordova.

ACTION: APPROVED - Director Hammond moved; Director Tretheway seconded approval of the item with modifications to several of the tables and adding more current information in the plan. Motion was carried by roll call vote. Ayes: Directors Dickinson, Hammond, Hume, MacGlashan, Miller, Morin, Nottoli, Pannell, Sander, Tretheway and Chair Cohn. Noes: None. Absent: None

REPORTS, IDEAS AND QUESTIONS FROM DIRECTORS, AND COMMUNICATIONS

13. Paratransit Board Meeting: July 23, 2009 (Hammond)

Written report provided in Board package; no additional comments were provided by Ms. Hammond.

14. Chair's Report (Cohn)

No report at this time.

PUBLIC ADDRESSES THE BOARD ON MATTERS NOT ON THE AGENDA

Mike Barnbaum - Noted the RT's website includes alerts to passengers.

ANNOUNCEMENT OF CLOSED SESSION ITEMS

RECESS TO CLOSED SESSION

CLOSED SESSION

RECONVENE IN OPEN SESSION

CLOSED SESSION REPORT

ADJOURN

As there was no further business to be conducted, the meeting was adjourned at 8:20 p.m.

STEVE COHN, Chair

A T T E S T:
MICHAEL R. WILEY, Secretary

By: _____
Cindy Brooks, Assistant Secretary

REGIONAL TRANSIT ISSUE PAPER

Agenda Item No.	Board Meeting Date	Open/Closed Session	Information/Action Item	Issue Date
2	08/24/09	Open	Action	07/28/09

Subject: Rejection of Claims

ISSUE

Whether to reject the following claims against Regional Transit.

RECOMMENDED ACTION

Adopt a motion to reject the following claims:

<u>Claimant</u>	<u>Amount Claimed</u>	<u>Description</u>
Rose, Brenton	\$4,100,000.00	<u>Rejection of Claim:</u> Claim is for wrongful death of claimant's brother who was struck by a SMUD vehicle while crossing the street near a light rail station.
Grover Jr., Johnnie	\$4,140,745.23	<u>Rejection of Claim:</u> Claim is for injuries and property damage sustained when claimant was involved in a collision with an RT bus.

FISCAL IMPACT

Budgeted:	Yes	This FY:	\$	N/A
Budget Source:	Operating	Next FY:	\$	N/A
Funding Source:	Local	Annualized:	\$	N/A
Cost Cntr/GL Acct(s) or Capital Project #:	N/A	Total Amount:	\$	N/A
Total Budget:	\$ See Below			

DISCUSSION

Regional Transit establishes reserves in an aggregate amount sufficient to cover losses for all claims up to the self insurance limit.

The above referenced claims are currently under investigation to determine if RT has any liability. Therefore, staff recommends the Board adopt a motion rejecting the above claims.

Approved:


General Manager/CEO

Presented:


Chief Administrative Officer/EEO

REGIONAL TRANSIT ISSUE PAPER

Agenda Item No.	Board Meeting Date	Open/Closed Session	Information/Action Item	Issue Date
3	08/24/09	Open	Action	08/05/09

Subject: Approving a Contract with Prudential for Life, AD&D and Supplemental/Voluntary Life Insurance Benefits for Employees and Eligible Dependents

ISSUE

Approving contract with Prudential to provide RT's Life, Accidental Death and Dismemberment (AD&D) and Supplemental/Voluntary Life Insurance benefits.

RECOMMENDED ACTION

Adopt Resolution No. 09-08-_____, Approving a Contract with Prudential to Provide Life, Accidental Death & Dismemberment and Supplemental/Voluntary Life Insurance Benefits, for RT Employees and Eligible Dependents

FISCAL IMPACT

Budgeted:	Yes	This FY:	\$	235,065.46**
Budget Source:	Operating	Next FY:	\$	235,065.46
Funding Source:	Federal/State/Local	Annualized:	\$	235,065.46
Cost Cntr/GL Acct(s) or Capital Project #:	Various Department GL Accounts	Total Amount:	\$	822,729.11
Total Budget:	\$ 235,065.46*			

* Total is for: Basic Life and AD&D for all employees; Supplemental/Voluntary Life Insurance is 100% employee paid.

** This amount represents a \$69,048.84 decrease from last year's premium.

DISCUSSION

During a July 2008 insurance renewal strategic planning meeting, RT's employee benefits broker, Keenan and Associates, recommended that RT, in an effort to reduce premium costs, seek proposals from life insurance providers. The RFP was released in November 2008. Responding to the RFP were Mutual of Omaha (current provider), Prudential, MetLife, ING and Standard Insurance Company. Attached hereto as Attachment 1 to the Issue Paper are the comparative rates offered by the respective bidders.

At the conclusion of the RFP review and selection process Prudential was selected as the Life, AD&D and Supplemental/Voluntary Life Insurance provider for employees and eligible dependents. Prudential has offered RT a 42-month Rate Guarantee for the period of July 1, 2009 through December 31, 2012, unless there is a change in the risk assumed, in which case Prudential can increase its rates without notice to RT. The Prudential contract will continue indefinitely until terminated by RT. Staff will re-evaluate the contract at the end of the Rate Guarantee or upon any earlier increase in rates by Prudential.

Approved:


General Manager/CEO

Presented:


Director, Human Resources

Agenda Item No.	Board Meeting Date	Open/Closed Session	Information/Action Item	Issue Date
3	08/24/09	Open	Action	08/05/09

Subject: Approving a Contract with Prudential for Life, AD&D and Supplemental/Voluntary Life Insurance Benefits for Employees and Eligible Dependents

Staff recommends approval of the new insurance contract. Staff also recommends that the contract be reviewed after any increase in rates.

Sacramento Regional Transit - Proposed Basic Life/ AD&D and Voluntary Life Options
Rate Comparison - Effective May 1, 2009

		Current	Proposed	Proposed	Proposed	Proposed
		Mutual of Omaha	Prudential	MetLife	ING	Standard Ins. Co.
		Renews 1/1/2010	3 years	3 years	3 years	2 years
		Rate/ \$1,000	Rate/ \$1,000	Rate/ \$1,000	Rate/ \$1,000	Rate/ \$1,000
Basic Life						
Class 1 - \$50,000		\$0.38	\$0.30	\$0.38	\$0.35	\$0.45
Class 2 - \$50,000		\$0.38	\$0.30	\$0.38	\$0.35	\$0.45
Class 3 - \$25,000		\$0.38	\$0.30	\$0.38	\$0.35	\$0.45
Class 4 - \$50,000		\$0.38	\$0.30	\$0.38	\$0.35	\$0.45
Class 5 - \$25,000		\$0.38	\$0.30	\$0.38	\$0.35	\$0.45
Class 6 - \$5,000		\$0.38	\$0.30	\$0.38	\$0.35	\$0.45
Class 7 - \$10,000		\$0.38	\$0.30	\$0.38	\$0.35	\$0.45
Class 8 - \$15,000		\$0.38	\$0.30	\$0.38	\$0.35	\$0.45
Basic Dependent Life		\$0.48/ unit	\$0.48/ unit	\$0.48/ unit	\$0.48/ unit	\$0.48/ unit
AD & D						
Class 1 - \$50,000		\$0.04	\$0.031	\$0.028	\$0.04	\$0.04
Class 2 - \$50,000		\$0.04	\$0.031	\$0.028	\$0.04	\$0.04
Class 3 - \$25,000		\$0.04	\$0.031	\$0.028	\$0.04	\$0.04

Sacramento Regional Transit - Proposed Basic Life/ AD&D and Voluntary Life Options
Rate Comparison - Effective May 1, 2009

Carrier	Current Mutual of Omaha	Proposed			
		Prudential Rate/ \$1,000	MetLife Rate/ \$1,000	ING Rate/ \$1,000	Proposed Standard Ins. Co. Rate/ \$1,000
Voluntary Life - Employee Only					
under 29	\$0.06	\$0.06	\$0.08	\$0.06	\$0.06
30 - 34	\$0.07	\$0.08	\$0.12	\$0.08	\$0.07
35 - 39	\$0.09	\$0.10	\$0.14	\$0.09	\$0.09
40 - 44	\$0.13	\$0.12	\$0.18	\$0.13	\$0.13
45 - 49	\$0.23	\$0.24	\$0.26	\$0.23	\$0.23
50 - 54	\$0.38	\$0.38	\$0.40	\$0.38	\$0.38
55 - 59	\$0.59	\$0.60	\$0.72	\$0.59	\$0.59
60 - 64	\$0.92	\$0.92	\$1.02	\$0.92	\$0.92
65 - 69	\$1.65	\$1.64	\$1.76	\$1.65	\$1.65
70 - 74	\$2.95	\$2.90	\$2.84	\$2.95	\$2.95
75+	\$4.86	\$4.86	\$2.84	\$4.86	\$4.86

Note: Separate schedule available for Voluntary Spouse & Dependent Life

**Sacramento Regional Transit - Proposed Basic Life/ AD&D and Voluntary Life Options
Rate Comparison - Effective May 1, 2009**

		Calculated Total Premiums & Savings						
		Voluntary Life - Employee Only - Monthly totals by Age Band						
Enrollment	Volume	Carrier	Mutual of Omaha	Prudential	MetLife	ING	Standard Ins. Co.	
3	\$ 410,000	under 29	\$24.60	\$24.60	\$32.80	\$24.60	\$24.60	
15	\$ 1,740,000	30 - 34	\$121.80	\$139.20	\$208.80	\$139.20	\$121.80	
24	\$ 4,560,000	35 - 39	\$410.40	\$456.00	\$638.40	\$410.40	\$410.40	
39	\$ 7,690,000	40 - 44	\$999.70	\$922.80	\$1,384.20	\$999.70	\$999.70	
45	\$ 8,850,000	45 - 49	\$2,035.50	\$2,124.00	\$2,301.00	\$2,035.50	\$2,035.50	
48	\$ 7,330,000	50 - 54	\$2,785.40	\$2,785.40	\$2,932.00	\$2,785.40	\$2,785.40	
51	\$ 6,650,000	55 - 59	\$3,923.50	\$3,990.00	\$4,788.00	\$3,923.50	\$3,923.50	
26	\$ 2,880,000	60 - 64	\$2,649.60	\$2,649.60	\$2,937.60	\$2,649.60	\$2,649.60	
3	\$ 170,000	65 - 69	\$280.50	\$278.80	\$299.20	\$280.50	\$280.50	
1	\$ 130,000	70 - 74	\$383.50	\$377.00	\$369.20	\$383.50	\$383.50	
Note: Separate schedule available for Voluntary Spouse & Dependent Life								
Monthly Voluntary Premium - Employee Only			\$13,614.50	\$13,747.40	\$15,891.20	\$13,631.90	\$13,614.50	
Annual Voluntary Premium - Employee Only			\$163,374.00	\$164,968.80	\$190,694.40	\$163,582.80	\$163,374.00	
Monthly Active Basic Life/ AD&D Premium (Classes 1, 2 & 3)			\$17,083.50	\$13,463.43	\$16,595.40	\$15,863.25	\$19,930.75	
Annual Active Basic Life/ AD&D Premium (Classes 1, 2 & 3)			\$205,002.00	\$161,561.10	\$199,144.80	\$190,359.00	\$239,169.00	
Monthly Retiree Basic Life Premium (Classes 4, 5, 6, 7 & 8)			\$3,389.22	\$2,675.70	\$3,389.22	\$3,121.65	\$4,013.55	
Annual Retiree Basic Life Premium (Classes 4, 5, 6, 7 & 8)			\$40,670.64	\$32,108.40	\$40,670.64	\$37,459.80	\$48,162.60	

The rates outlined above are intended as a rate comparison only. Final rates are subject to actual enrollment, plan design(s) selected, and underwriting approval.

RESOLUTION NO. 09-08-_____

Adopted by the Board of Directors of the Sacramento Regional Transit District on this date:

August 24, 2009

**APPROVING A CONTRACT WITH PRUDENTIAL TO
PROVIDE LIFE, ACCIDENTAL DEATH & DISMEMBERMENT AND
SUPPLEMENTAL/VOLUNTARY
LIFE INSURANCE BENEFITS, FOR RT EMPLOYEES AND ELIGIBLE DEPENDENTS**

BE IT HEREBY RESOLVED BY THE BOARD OF DIRECTORS OF THE SACRAMENTO REGIONAL TRANSIT DISTRICT AS FOLLOWS:

THAT, the Contract between the Sacramento Regional Transit District (therein "Contract Holder") and the Prudential Insurance Company of America (therein Prudential) wherein Prudential agrees to provide Life, Accidental Death & Dismemberment and Supplemental/Voluntary Life insurance benefits for District employees and eligible dependents, at the rates set forth in the attached Exhibit A, is hereby approved.

THAT, the General Manager or his/her designee is directed to re-evaluate the above Contract immediately upon any increase in the rates set forth in the attached Exhibit A in accordance with the terms set out in the Contract.

THAT, the General Manager/CEO is hereby authorized and directed to execute the above Contract.

STEVE COHN, Chair

A T T E S T:

MICHAEL R. WILEY, Secretary

By: _____
Cindy Brooks, Assistant Secretary

Exhibit A

Basic Life Insurance	Rate/\$1000
All Classes of Employees	\$0.30
Dependent Life Insurance	Rate/unit
All Eligible Classes of Employees	\$0.48
AD&D	Rate/\$1,000
All Classes of Employees	\$0.031
Voluntary Life Insurance	Rate/\$1,000
Under age 29	\$0.06
30-34	\$0.08
35-39	\$0.10
40-44	\$0.12
45-49	\$0.24
50-54	\$0.38
55-59	\$0.60
60-64	\$0.92
65-69	\$1.64
70-74	\$2.90
76+	\$4.86

REGIONAL TRANSIT ISSUE PAPER

Agenda Item No.	Board Meeting Date	Open/Closed Session	Information/Action Item	Issue Date
4	08/24/09	Open	Action	08/12/09

Subject: Approving an Easement Agreement with the City of Sacramento to install sidewalk improvements within Sacramento-Placerville Transportation Corridor Joint Powers Authority/Regional Transit's right of way at Redding Avenue between 4th Avenue and Q Street

ISSUE

Whether to approve an easement agreement with the Sacramento-Placerville Transportation Corridor Joint Powers Authority (JPA), Sacramento Regional Transit District (RT) and the City of Sacramento to install and maintain public improvements within RT's right of way at Redding Avenue just South of Q Street.

RECOMMENDED ACTION

Adopt Resolution No. 09-08-_____, Approving Easement Agreement for Installation and Maintenance of Public Sidewalk and Street Improvements Between the Sacramento-Placerville Transportation Corridor Joint Powers Authority, Sacramento Regional Transit District and the City of Sacramento at Redding Avenue South of Q Street.

FISCAL IMPACT

None.

DISCUSSION

The subject property is located within the JPA's right of way, over which RT has an easement interest. The proposed City of Sacramento easement area is located just South of Q Street and is further identified in Attachments "A" through "C".

The City of Sacramento has requested an easement interest to install, construct and maintain sidewalks and to resurface the road to improve pedestrian safety along the right of way at three locations within the areas shown on Attachments "A-1", "B-1" and "C-1".


RT Engineering and Construction staff have reviewed and approved the plans for installation of sidewalk improvements.

Pursuant to the terms of the Easement Agreement, the JPA will grant the City of Sacramento an easement over the area within the rail right of way containing the improvements. Staff recommends approval of the Easement Agreement between the JPA, RT and the City of Sacramento for installation and maintenance of the public improvements.

Approved:


General Manager/CEO

Presented:


Director of Real Estate

ATTACHMENT "A"

APN 015-0010-038

All that real property situate in the City of Sacramento, County of Sacramento, State of California, being a portion of the tract of land described in the Grant Deed to Sacramento-Placerville Transportation Corridor Joint Powers Authority, recorded in Book 960906, Page 1665 Sacramento County Records, located in Section 15, Township 8 North, Range 5 East M.D.M being more particularly described as follows:

BEGINNING AT A POINT on the Southerly line of the above described lands of Sacramento-Placerville Transportation Corridor Joint Powers Authority and from said point the Southeast corner of said lands of Sacramento-Placerville Transportation Corridor Joint Powers Authority bears South 71°05'29" East along said Southerly line for a distance of 50.51 feet; thence from the Point of Beginning North 71°05'29" West along said Southerly line for a distance of 9.17 feet; thence leaving said Southerly line the following two (2) consecutive courses and distances:

1. North 14°16'30" East for a distance of 32.34 feet; and
2. North 09°09'23" West for a distance of 16.11 feet to a point on the Northerly line of said lands of Sacramento-Placerville Transportation Corridor Joint Powers Authority; thence along said Northerly line the following two (2) consecutive courses and distances:
 1. along the arc of a non-tangent curve, concave Northeasterly, having a radius of 7022.00 feet, a central angle of 00°05'03", a length of 10.30 feet and a chord bearing South 71°02'57" East for a distance of 10.30 feet; and
 2. South 71°05'28" East for a distance of 2.10 feet; thence leaving said Northerly line South 10°22'34" West for a distance of 46.96 feet to the **POINT OF BEGINNING**.

CONTAINING: an area of 397 square feet, more or less.

The above described tract of land is shown on Exhibit 'A1' attached hereto and made a part hereof.

All bearings shown herein are grid, California State Plane Coordinate System, Zone 2, North American Datum of 1983. All distances herein are grid distances in U.S. Survey Feet. To compute ground distance, divide grid distances by 0.99996100.

This real property description has been prepared by me, or under my direction, in conformance with the Professional Land Surveyors Act.

END OF DESCRIPTION.



ATTACHMENT "B"

APN 015-0010-039

All that real property situate in the City of Sacramento, County of Sacramento, State of California, being a portion of the tract of land described in the Grant Deed to Sacramento Regional Transit District recorded in Book 851220 at Page 1777, Sacramento County Records, located in Section 15, Township 8 North, Range 5 East M.D.M being more particularly described as follows:

AREA 'A'

BEGINNING AT A POINT on the Northerly line of the above described lands of Sacramento Regional Transit District and the Easterly right of way line of Redding Avenue and from said point the Southwesterly corner of the tract of lands described in the Grant Deed to Airgas – Northern California & Nevada, Inc. recorded in Book 981109, at Page 249, Sacramento County Records bears North 10°22'34" East for a distance of 19.29 feet; thence from the point of beginning South 71°05'28" East along said Northerly line for a distance of 2.23 feet; thence leaving said Northerly line South 20°13'24" West for a distance of 12.90 feet to a point on said Easterly right of way line of Redding Avenue; thence North 10°22'34" East along said Easterly line for a distance of 13.04 feet to the **POINT OF BEGINNING**.

CONTAINING: an area of 14 square feet, more or less.

AREA 'B'

BEGINNING AT A POINT on the Northerly line of the above described lands of Sacramento Regional Transit District and the Westerly right of way line of Redding Avenue and from said point the Southwesterly corner of the tract of lands described in the Grant Deed to Airgas – Northern California & Nevada, Inc. recorded in Book 981109, at Page 249, Sacramento County Records bears the following two (2) consecutive courses and distances:

1. North 10°22'34" East along said Westerly right of way line of Redding Avenue for a distance of 18.96 feet; and
2. leaving said Westerly right of way line South 71°05'28" East for a distance of 50.53 feet; thence from the point of beginning South 10°22'34" West along said Westerly right of way line for a distance of 35.44 feet to a point on the Southerly line of said lands of Sacramento Regional Transit District; thence along said Southerly line the following two (2) consecutive courses and distances:
 1. North 71°05'28" West for a distance of 2.10 feet; and
 2. along the arc of a tangent curve concave Northeasterly, having a radius of 7021.73 feet, a central angle of 00°05'03", and a length of 10.31 feet and a chord bearing North 71°02'57" West for a distance of 10.30 feet; thence leaving said Southerly line the following two (2) consecutive courses and distances:
 1. North 09°09'23" West for a distance of 6.95 feet; and

2. North 18°55'19" East for a distance of 29.90 feet to a point on the Northerly line of said lands of Sacramento Regional Transit District; thence South 65°37'10" East along said Northerly line for a distance of 10.45 feet to the **POINT OF BEGINNING**.

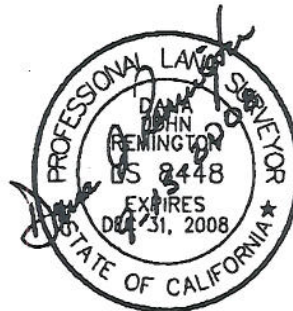
CONTAINING: an area of 452 square feet, more or less.

The above described tract of land is shown on Exhibit 'A1' attached hereto and made a part hereof.

All bearings shown herein are grid, California State Plane Coordinate System, Zone 2, North American Datum of 1983. All distances herein are grid distances in U.S. Survey Feet. To compute ground distance, divide grid distances by 0.99996100.

This real property description has been prepared by me, or under my direction, in conformance with the Professional Land Surveyors Act.

END OF DESCRIPTION



ATTACHMENT "C"

APN 015-0010-040

All that real property situate in the City of Sacramento, County of Sacramento, State of California, being a portion of the tract of land described in the Grant Deed to Sacramento Regional Transit District recorded in Book 851220 Page 1777 Sacramento County Records, located in Section 15, Township 8 North, Range 5 East M.D.M. being more particularly described as follows:

AREA 'A'

BEGINNING at the Southwesterly corner of the tract of land described in the Grant Deed to Airgas – Northern California & Nevada, Inc. recorded in Book 981109, at Page 249, Sacramento County; thence South 71°05'28" East along the Northerly line of the above described lands of Sacramento Regional Transit District for a distance of 2.28 feet; thence leaving said Northerly line the following two (2) consecutive courses and distances:

1. South 02°00'06" West for a distance of 10.40 feet; and
2. South 20°13'19" West for a distance of 9.13 feet to a point on the Southerly line of said lands of Sacramento Regional Transit District; thence North 71°05'28" West along said Southerly line for a distance of 2.23 feet to a point on the Easterly right of way line of Redding Avenue; thence leaving said Southerly line North 10°22'34" East along said Easterly right of way line of Redding Avenue for a distance of 19.29 feet to the **POINT OF BEGINNING**.

CONTAINING: an area of 58 square feet, more or less.

AREA 'B'

BEGINNING AT A POINT on the Northerly line of the above described lands of Sacramento Regional Transit District said point being on the Westerly right of way line of Redding Avenue; and from said point the Southwesterly corner of the tract of land described in the Grant Deed to Airgas – Northern California & Nevada, Inc. recorded in Book 981109, at Page 249, Sacramento County bears South 71°05'28" East along said Northerly line for a distance of 50.53 feet; thence from the point of beginning South 10°22'34" West along said Westerly right of way line of Redding Avenue for a distance of 18.96 feet to a point on the Southerly line of said lands of Sacramento Regional Transit District; thence North 65°37'10" West along said Southerly line for a distance of 10.45 feet; thence leaving said Southerly line the following three (3) consecutive courses and distances:

1. North 18°55'19" East for a distance of 10.41 feet;
2. North 67°27'03" West for a distance of 28.11 feet; and
3. North 24°33'57" West for a distance of 7.66 feet to a point on the Northerly line of Said lands of Sacramento Regional Transit District; thence South 71°05'28" East along said Northerly line for a distance of 40.91 feet to the **POINT OF BEGINNING**.

CONTAINING: an area of 359 square feet, more or less.

The above described tract of land is shown on Exhibit 'A1' attached hereto and made a part hereof.

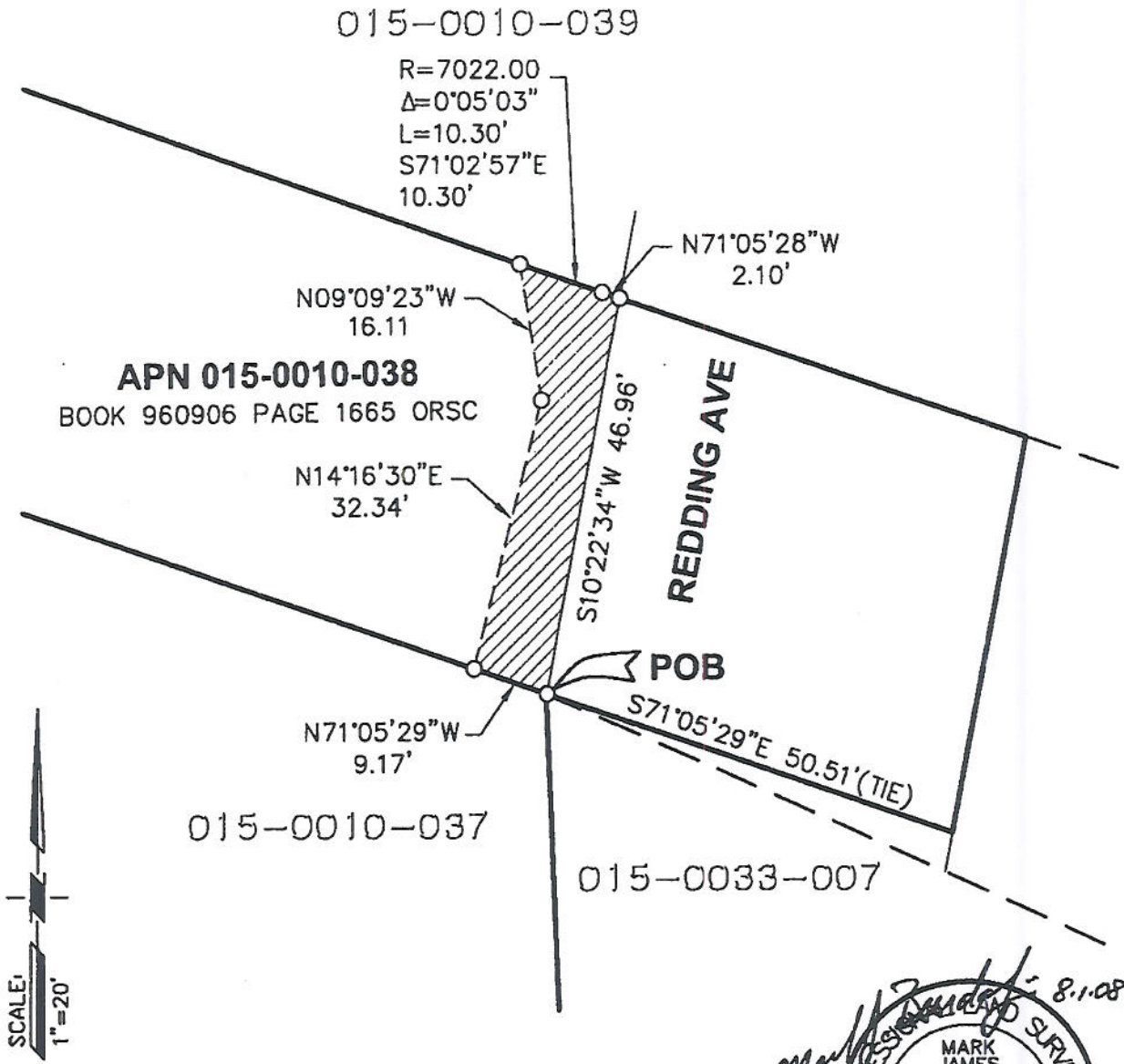
All bearings shown herein are grid, California State Plane Coordinate System, Zone 2, North American Datum of 1983. All distances herein are grid distances in U.S. Survey Feet. To compute ground distance, divide grid distances by 0.99996100.

This real property description has been prepared by me, or under my direction, in conformance with the Professional Land Surveyors Act.

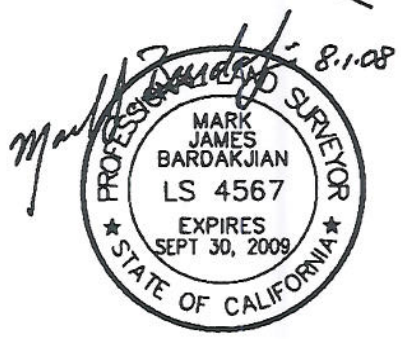
END OF DESCRIPTION



A PORTION OF THE
 NORTHWEST ONE-QUARTER OF SECTION 15,
 TOWNSHIP 08 NORTH, RANGE 05 EAST, M.D.M.
 SACRAMENTO COUNTY, CALIFORNIA



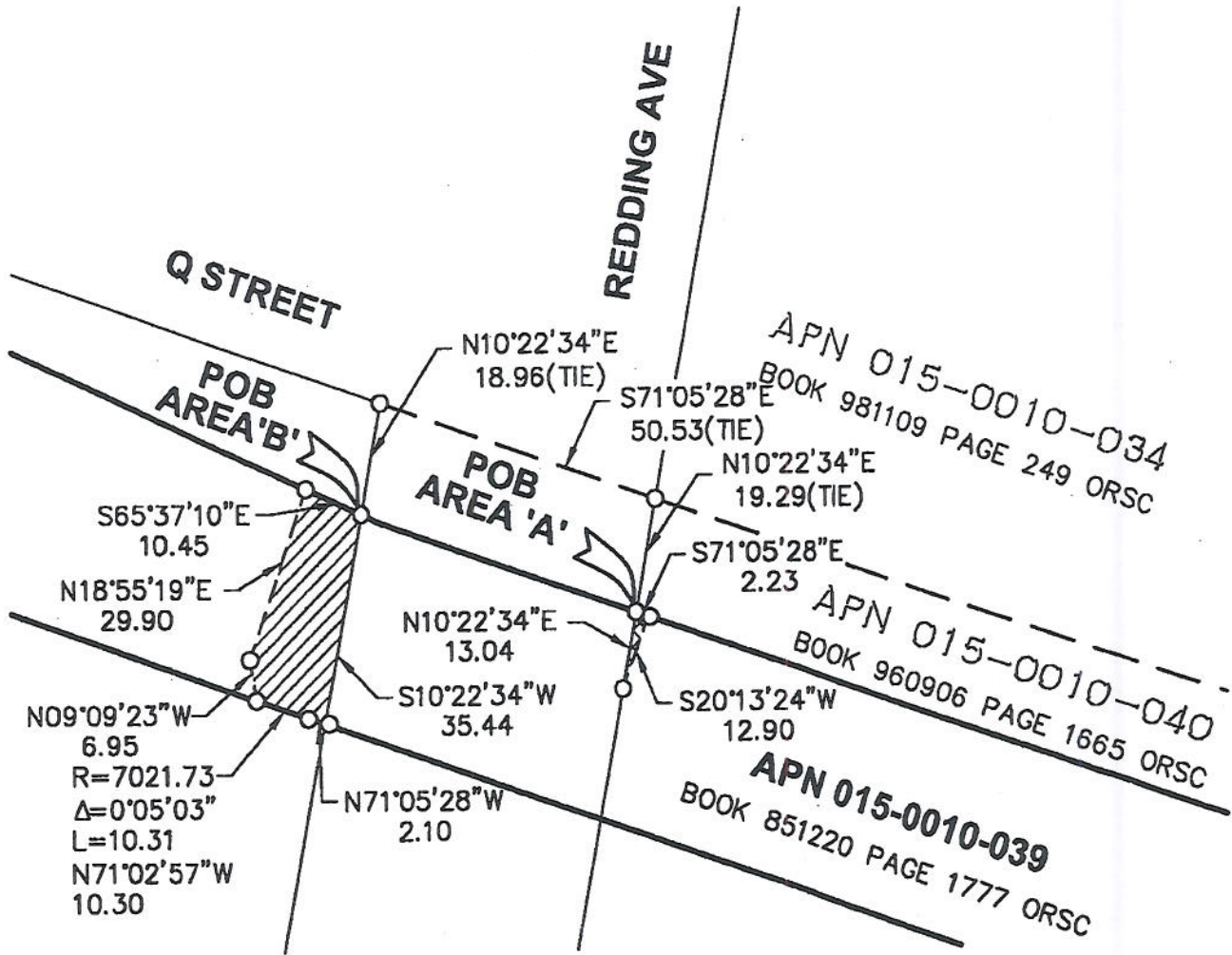
. . . . AREA=397± SQ FT





REDDING AVENUE/69TH STREET PROJECT		
EXHIBIT "A1"		
PLAT OF REAL PROPERTY FOR SACRAMENTO PLACERVILLE TRANSPORTATION CORRIDOR JOINT POWERS AUTHORITY		
SCALE: 1"=20'	DRAWN: JP	PROJECT: 13382
DATE: 1 AUG 08	CHECKED: MF	SHEET 1 OF 1

ANDREGG
 GEOMATICS
 www.andregg.com
 800-400-7072

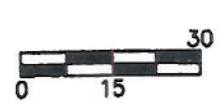
A PORTION OF THE
 NORTHWEST ONE-QUARTER OF SECTION 15,
 TOWNSHIP 08 NORTH, RANGE 05 EAST, M.D.M.
 SACRAMENTO COUNTY, CALIFORNIA



 AREA 'A'=14± SQ FT
 AREA 'B'=452± SQ FT

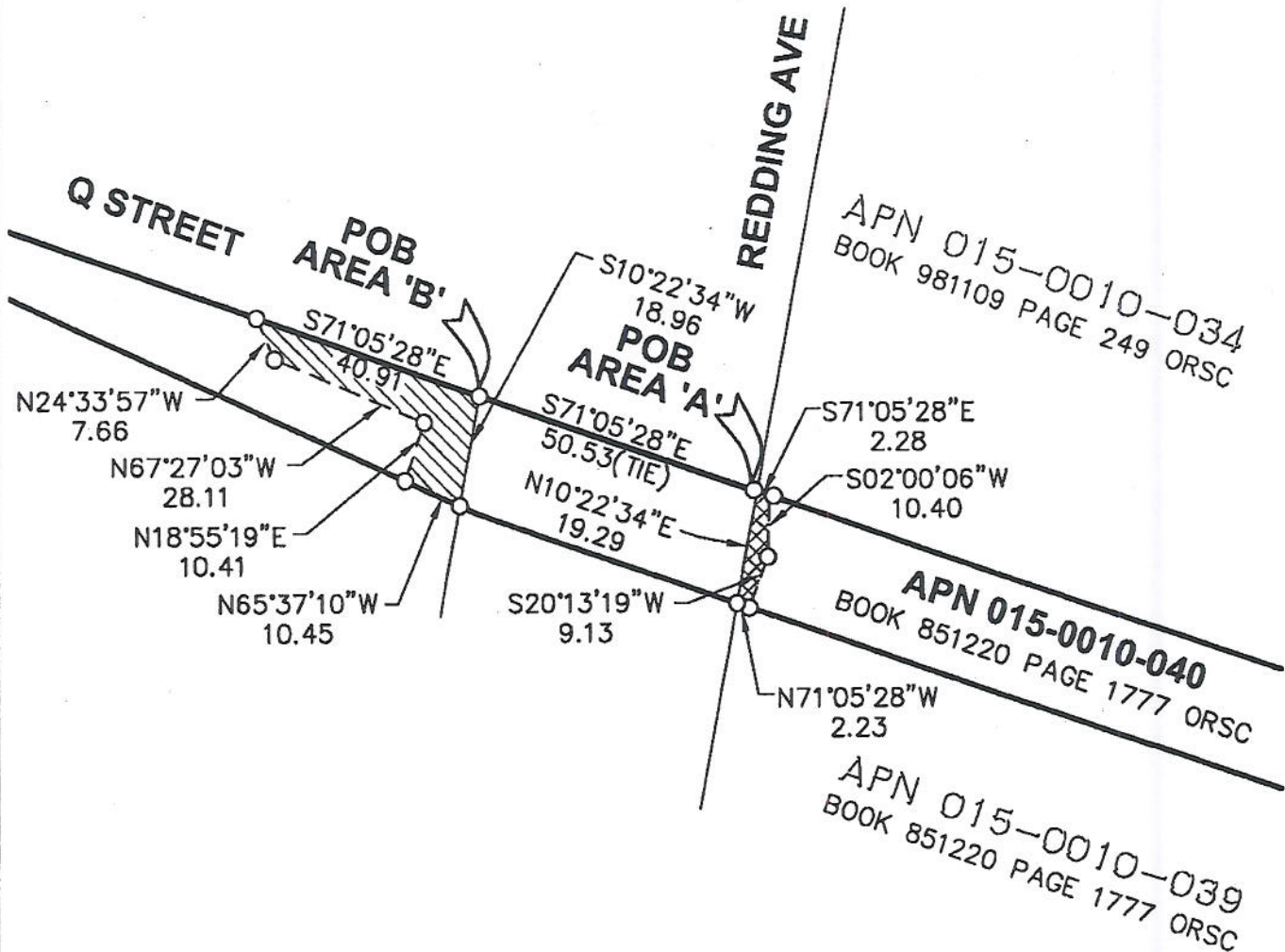


REDDING AVENUE/69TH STREET PROJECT			
EXHIBIT "A1" PLAT OF REAL PROPERTY FOR SACRAMENTO REGIONAL TRANSIT DISTRICT			
SCALE: 1"=30'	DRAWN: JP	PROJECT: 13382	
DATE: 15 SEPT 08	CHECKED: MF	SHEET 1 OF 1	



**ANDREGG
 GEOMATICS**
 www.andregg.com
 800-400-7072

**A PORTION OF THE
NORTHWEST ONE-QUARTER OF SECTION 15,
TOWNSHIP 08 NORTH, RANGE 05 EAST, M.D.M.
SACRAMENTO COUNTY, CALIFORNIA**



- AREA 'A' = 58± SQ FT
- AREA 'B' = 359± SQ FT



REDDING AVENUE/69TH STREET PROJECT			
EXHIBIT "A1" PLAT OF REAL PROPERTY FOR SACRAMENTO REGIONAL TRANSIT DISTRICT			
SCALE: 1"=30'	DRAWN: JP	PROJECT: 13382	
DATE: 19 AUG 08	CHECKED: MF	SHEET 1 OF 1	



**ANDREGG
GEOMATICS**
 www.andregg.com
 800-400-7072

RESOLUTION NO. 09-08-_____

Adopted by the Board of Directors of the Sacramento Regional Transit District on this date:

August 24, 2009

**APPROVING EASEMENT AGREEMENT FOR INSTALLATION AND MAINTENANCE
OF PUBLIC SIDEWALK AND STREET IMPROVEMENTS BETWEEN THE
SACRAMENTO PLACERVILLE TRANSPORTATION CORRIDOR JOINT POWERS
AUTHORITY, SACRAMENTO REGIONAL TRANSIT DISTRICT AND THE CITY OF
SACRAMENTO AT REDDING AVENUE SOUTH OF Q STREET**

BE IT HEREBY RESOLVED BY THE BOARD OF DIRECTORS OF THE
SACRAMENTO REGIONAL TRANSIT DISTRICT AS FOLLOWS:

THAT, the Easement Agreement between the Sacramento-Placerville Transportation Corridor Joint Powers Authority therein referred to as "JPA", the Sacramento Regional Transit District, therein referred to as "RT" (collectively referred to herein as "Grantor"), and the City of Sacramento, therein referred to as "Grantee", whereby Grantor grants a non-exclusive easement for the purpose of installing and maintaining sidewalks perpendicular to RT's light rail tracks along the Amtrak/Folsom Corridor as further set forth therein, within the area which is further identified as Assessor Parcel Numbers 015-0010-038, 039, 040, is hereby approved.

THAT, the General Manager/CEO is hereby authorized and directed to execute said Easement Agreement.

STEVE COHN, Chair

A T T E S T:

MICHAEL R. WILEY, Secretary

By: _____
Cindy Brooks, Assistant Secretary

REGIONAL TRANSIT ISSUE PAPER

Page 1 of 1

Agenda Item No.	Board Meeting Date	Open/Closed Session	Information/Action Item	Issue Date
5	08/24/09	Open	Action	07/27/09

Subject: Sale of Surplus Buses to University of California Davis (Unitrans)

ISSUE

Whether to sell surplus buses to University of California Davis (Unitrans).

RECOMMENDED ACTION

Adopt Resolution No. 09-08-_____ Authorizing the Sale of Two Surplus Buses to University of California Davis (Unitrans).

FISCAL IMPACT

The sale will result in a net income of \$3,600.

DISCUSSION

On September 8, 2008, the Board approved a lease agreement with University of California Davis (Unitrans) whereby RT would lease four 9600 Orion buses to Unitrans for \$1.00 per bus per month. The lease agreement included a provision for Unitrans to procure the buses. Unitrans is interested in procuring two of the buses and returning the remaining two buses to RT.

RT is in the process of selling the remaining 1996 Orion V buses that were permanently removed from service and declared surplus as a result of purchasing 91 new Orion low floor buses.

Section 2.102 of RT's Procurement Ordinance requires that surplus property be sold through a sealed bid or public auction process. Section 2.104 contains an exemption to this requirement and allows, with Board approval, the sale of surplus property directly to another public agency. This exemption was used recently to sell surplus buses to the City of Woodland and to the California Fire and Rescue Training Authority.

On March 31, 2009, RT sold 17 surplus Orion buses of various models/ages and in different states of mechanical condition in a publicly advertised surplus property sale. Based on the bids submitted at that sale, a 1996 Orion V (the same model and vintage as the buses being requested by Unitrans) has a fair market value of \$1,800.

Staff is recommending the Board grant an exemption to the competitive bid process for the sale of surplus property and allow University of California Davis (Unitrans) to purchase the buses at the fair market value of \$1,800 each.

Approved:


General Manager/CEO

Presented:


Director, Procurement Services

RESOLUTION NO. 09-08-_____

Adopted by the Board of Directors of the Sacramento Regional Transit District on this date:

August 24, 2009

AUTHORIZING THE SALE OF TWO SURPLUS BUSES TO UNIVERSITY OF CALIFORNIA DAVIS (UNITRANS)

WHEREAS, Sacramento Regional Transit District has Orion V coaches that the General Manager/CEO has declared to be surplus property pursuant to Section 2.102 of RT's Procurement Ordinance; and

WHEREAS, University of California Davis (Unitrans) has an immediate need for two coaches; and

WHEREAS, based on bids from a publicly advertised surplus property sale, the fair market value for a 1996 Orion V coach in running condition and without tires \$1,800; and

WHEREAS, University of California Davis (Unitrans) desires to purchase two coaches at fair market value.

BE IT HEREBY RESOLVED BY THE BOARD OF DIRECTORS OF THE SACRAMENTO REGIONAL TRANSIT DISTRICT AS FOLLOWS:

THAT, this Board finds the fair market value of a 1996 Orion V coach in running condition to be \$1,800.

THAT, this Board finds the recent determination of fair market value for this series of Orion coaches an appropriate basis upon which to authorize an exemption to the competitive bid process for the sale of the aforementioned Orion coaches.

THAT, the sale to University of California Davis (Unitrans) "as is, where is" of two 1996 Orion V coaches without tires for a total price of \$3,600, is hereby approved.

THAT, the General Manager/CEO is hereby authorized to take the actions required to effectuate the sale of two 1996 Orion V coaches to University of California Davis (Unitrans) under the foregoing terms and conditions.

STEVE COHN, Chair

A T T E S T:

MICHAEL R. WILEY, Secretary

By: _____
Cindy Brooks, Assistant Secretary